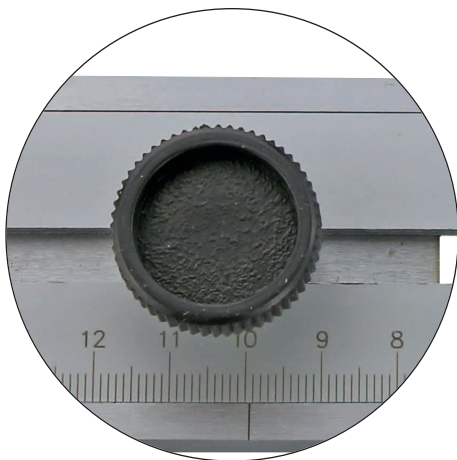
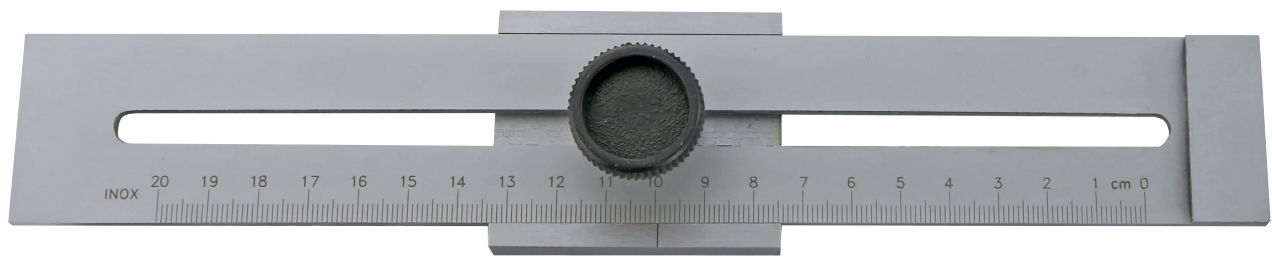


STREICHMASS

STEEL MARKING GAUGES



- Skala mattverchromt
- Anreißkante gehärtet
- mit mm-Skalierung
- im Behältnis/Kasten

- *flat pattern, hardened layout-edge*
- *with mm-graduation*
- *in case/box*

Art.-Nr. <i>Item no.</i>	Messbereich <i>Range mm</i>	Stahl <i>Steel</i>
201.191	200	Normalstahl / <i>tool steel</i>
201.192	250	Normalstahl / <i>tool steel</i>
201.193	300	Normalstahl / <i>tool steel</i>
201.194	200	INOX / <i>inox</i>
201.195	250	INOX / <i>inox</i>
201.196	300	INOX / <i>inox</i>