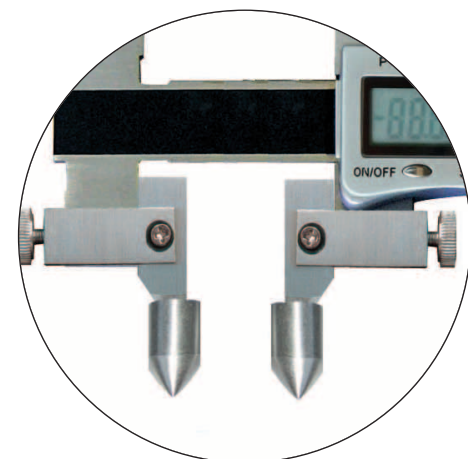
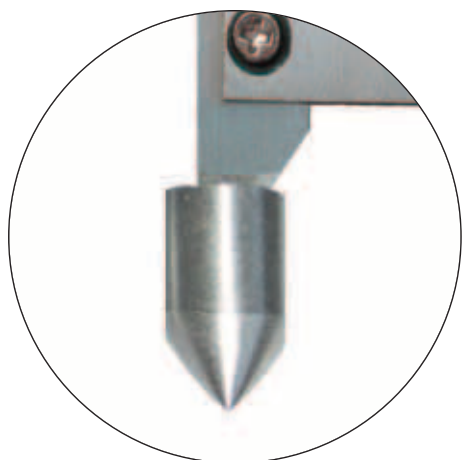
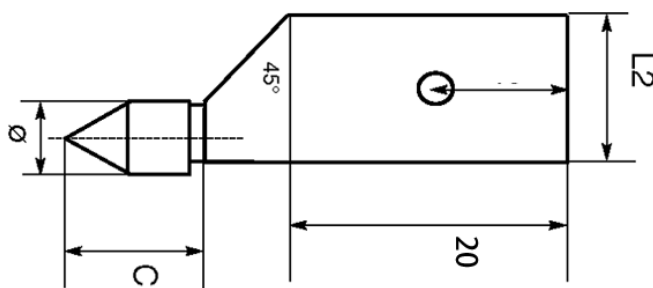
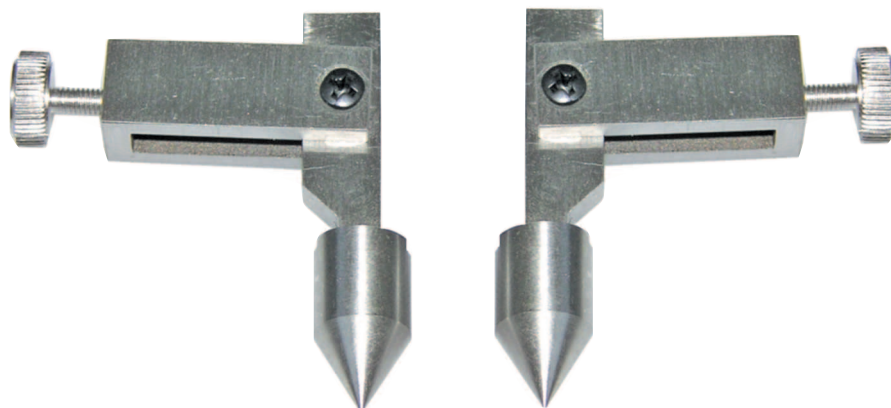


MESSEINSÄTZE FÜR DIGITAL-UNIVERSAL-MESSSCHIEBER
MEASURING TIPS FOR DIGITAL UNIVERSAL CALIPER

MIT KEGEL-MESSFLÄCHEN ZUR MESSUNG VON BOHRUNGSABSTÄNDEN
WITH CONICAL MEASURING FACES FOR DISTANCE OF BORE



- speziell für Digital-Messschieber der Serie 240.201-240.204
- aus rostfreiem Stahl
- Lieferung paarweise

- *specifically for digital caliper serial 240.201 - 240.204*
- *made of stainless steel*
- *delivery pairwise*

Art.-Nr. <i>Item no.</i>	ø <i>mm</i>	C <i>mm</i>	L2 <i>mm</i>	L <i>mm</i>
240.251	5	10	8	35
240.252	10	20	8	44
240.253	15	25	12	48